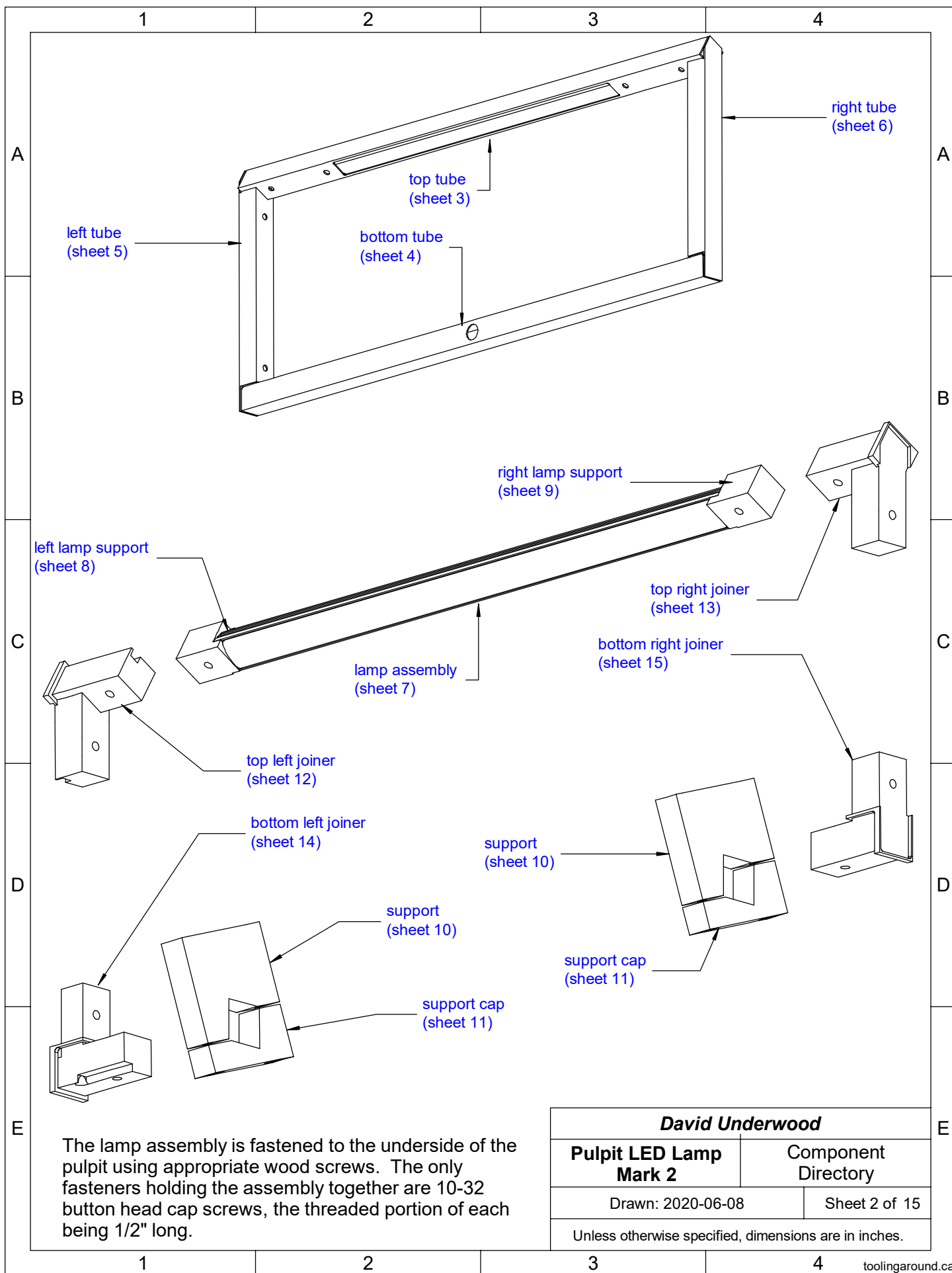
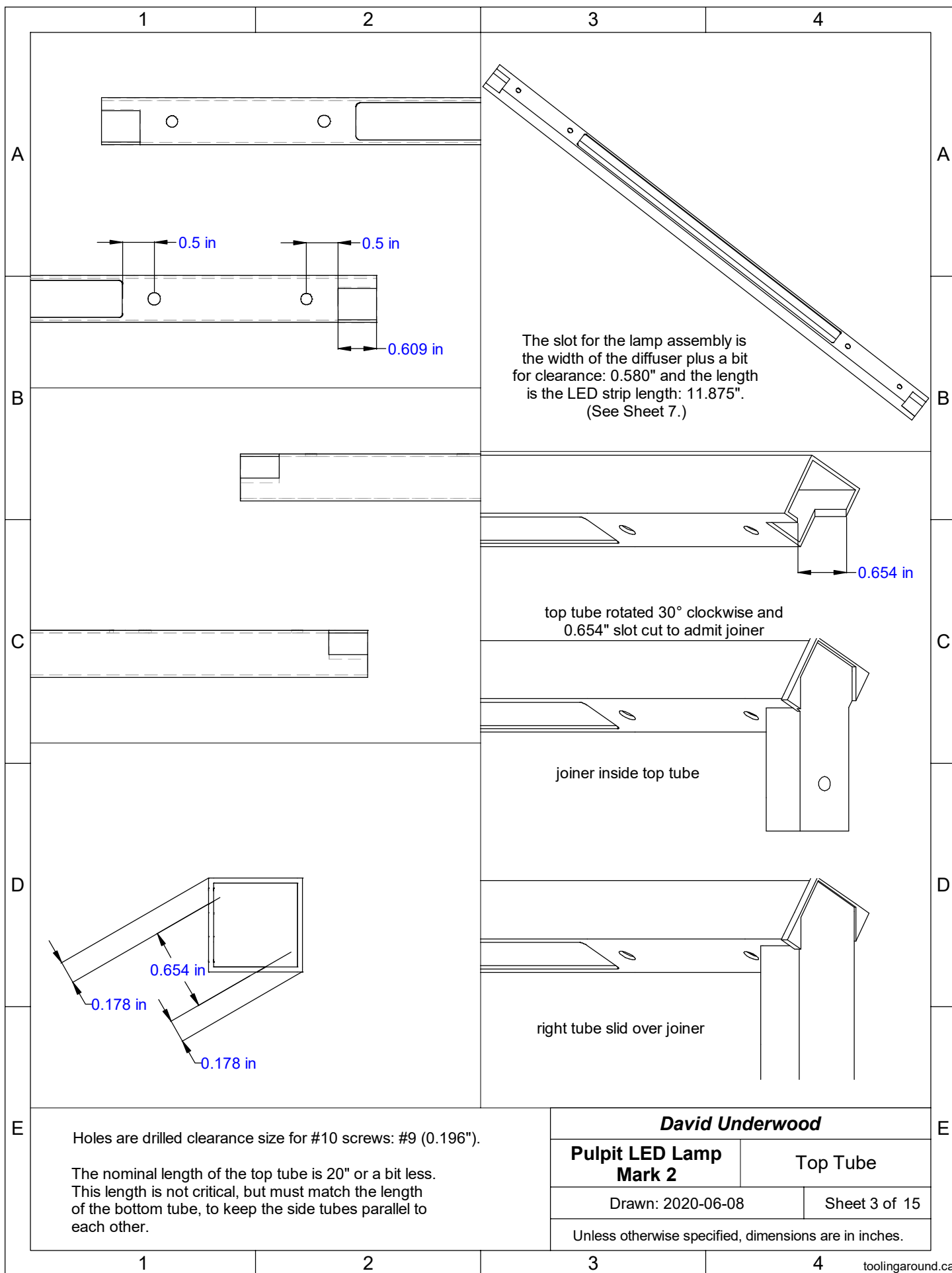


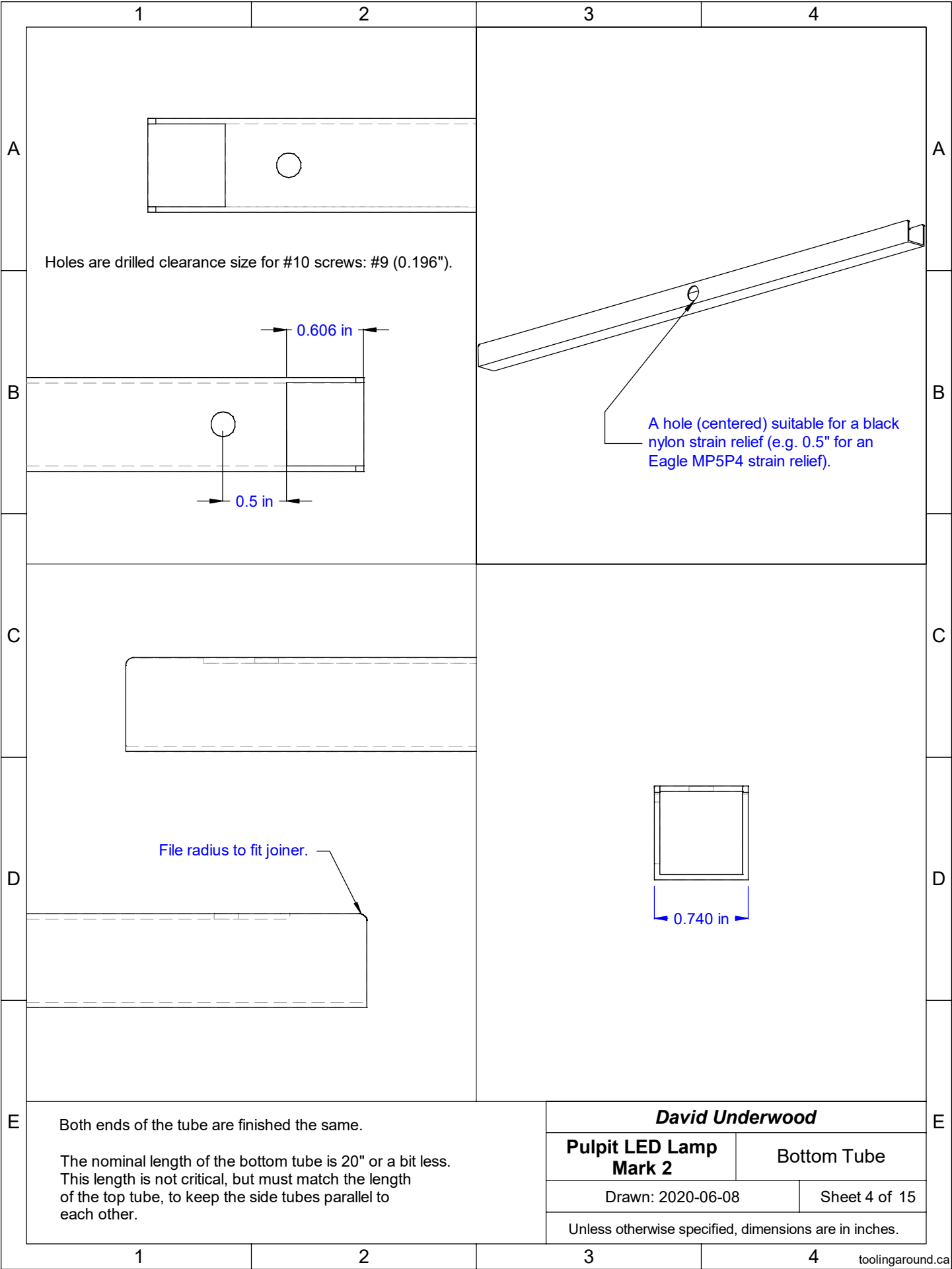
This is the general arrangement of the components of an LED lamp designed to fit the height-adjustable easel of a pulpit. Unlike the easel shown in this drawing, the actual one has carved ornamentation around the edge of the underside (shown in the drawing to the left).

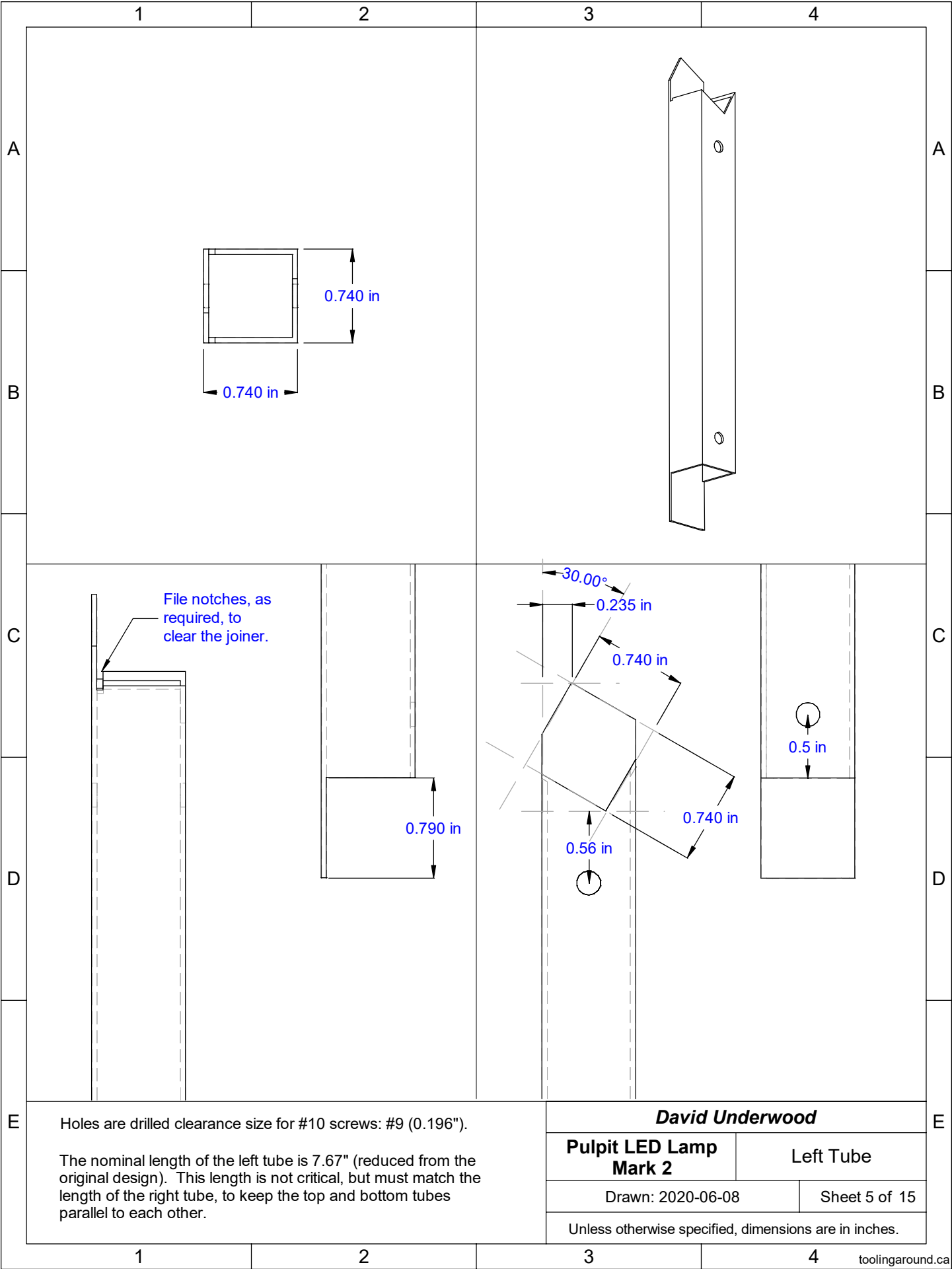
The lower horizontal bar of the lamp protrudes through existing gaps in this carving (circled in the drawing to the left). Because the lamp is attached to the easel and not the pulpit itself, the lamp is in an appropriate position regardless of the height adjustment of the easel.

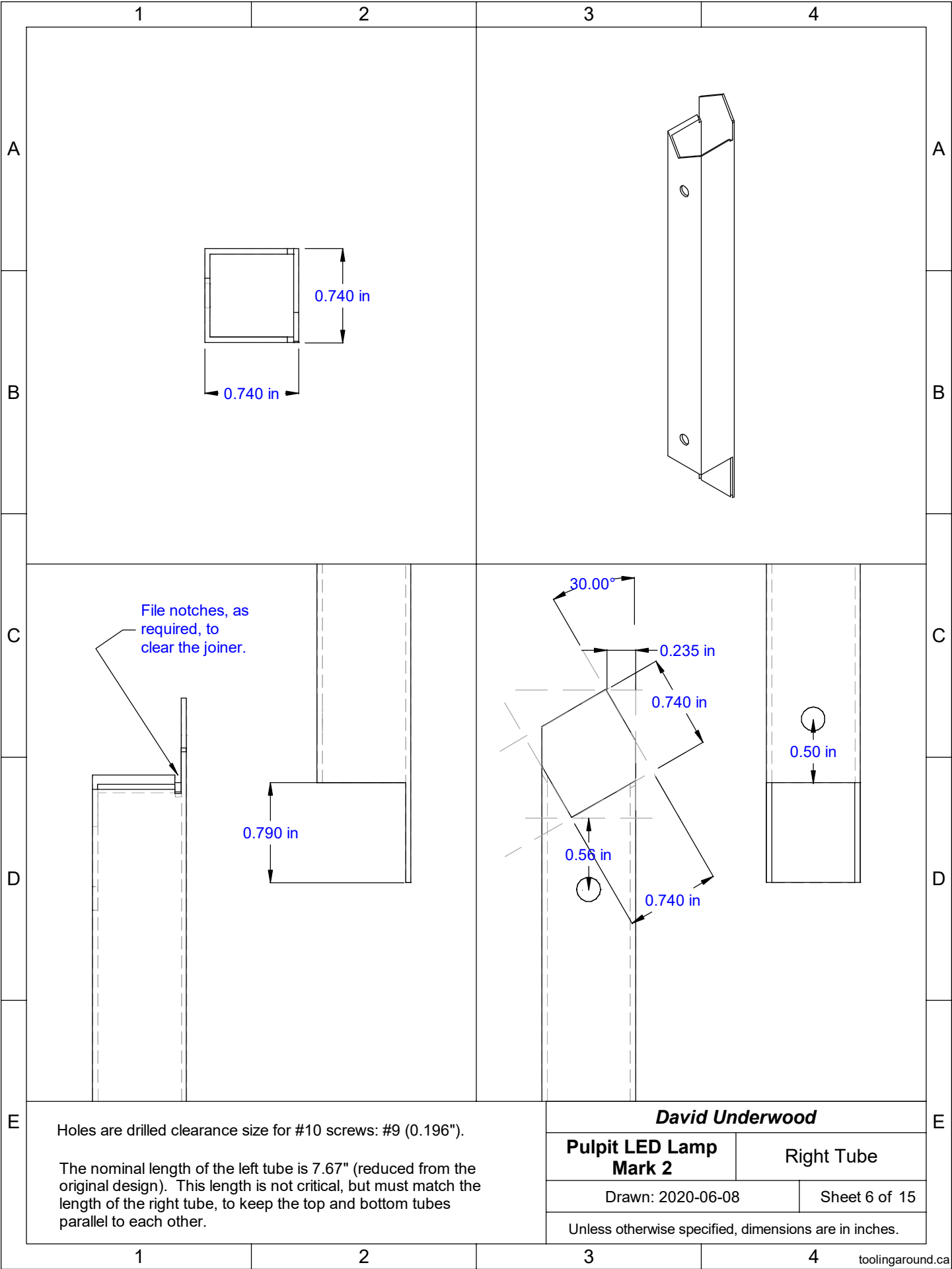
David Underwood	
Pulpit LED Lamp Mark 2	General Arrangement
Drawn: 2020-06-08	Sheet 1 of 15
Unless otherwise specified, dimensions are in inches.	


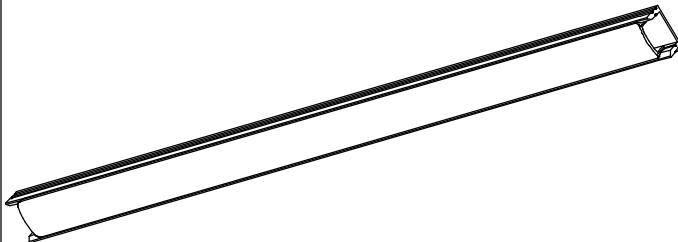

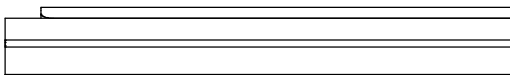
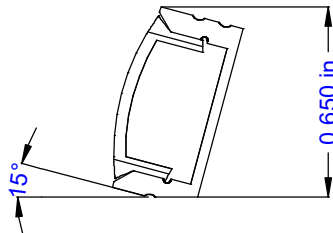
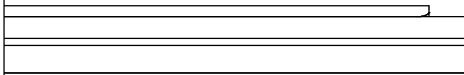










	1	2	3	4						
A			 <p>The lamp assembly consists of an aluminum extrusion and a plastic diffuser. The extrusion is 12.25" long. The diffuser is the length of the top tube opening: 11.875" (Sheet 3). An LED tape containing 36 LED's (length 11.875") is fixed to the inside of the extrusion.</p>							
B										
C			<p>In this Mark 2 version, the lamp assembly is rotated 15° within the top tube, to direct the light further down toward the centre of the easel. This change is because the top tube is 3 inches lower than in the previous version.</p>  <p>The corner of the extrusion is trimmed to reduce the overall height to 0.650" so it will fit inside the top tube.</p>							
D										
E			<div>David Underwood</div> <table><tr><td>Pulpit LED Lamp Mark 2</td><td>Lamp Assembly</td></tr><tr><td>Drawn: 2020-06-08</td><td>Sheet 7 of 15</td></tr><tr><td colspan="2">Unless otherwise specified, dimensions are in inches.</td></tr></table>		Pulpit LED Lamp Mark 2	Lamp Assembly	Drawn: 2020-06-08	Sheet 7 of 15	Unless otherwise specified, dimensions are in inches.	
Pulpit LED Lamp Mark 2	Lamp Assembly									
Drawn: 2020-06-08	Sheet 7 of 15									
Unless otherwise specified, dimensions are in inches.										
	1	2	3	4						

toolingaround.ca

